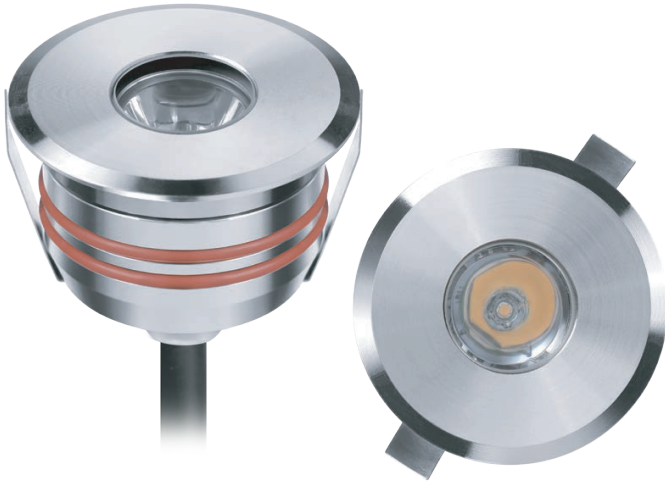


# XL marlin Lighting

## MULTIPLE APPLICATIONS Recessed Light Data Sheet

### Model: OLD1011



#### General Data

Power	1.5 Watts
LED type	1 PC CREE XPE LED
Luminous flux	90~95 lm
CCT	3000K or 4000K as standard. Different CCT upon request.
CRI	80+
Beam angle	15°, 25°, 38°, 45°, 60°, 120°
Dimension	Ø45 x 36 mm
Cut out dia.	Ø39.4x60 mm
Weight (kgs)	0.165 kgs
Lamp Life	50000 hrs
SDCM	≤3
Ambient Temp.	-15~50°C
RAL Color	80+
Oper. Temp.	-15~50°C
Certifications	CE, RoHS

#### Construction Data

IP rating	IP68 Waterproof
IK rating	IK06
Housing	Solid Passivated (Anodizing) Aluminum CNC machined
Protection finishing	20~25µm thickness anodized film for Aluminum housing .
Trim	Stainless steel 316
Glass	Step tempered Glass. T=4mm.
Loading capacity	320 kgs
Cable Gland	PG7 IP68, Glue
Gasket	O-ring PMQ silicone seal

#### Electrical Data

Input voltage	DC12V/DC24V
Insulation class	Class III
Cable	1PC rubber cable 1M H05RN-F 2x1mm square
Driver	Low voltage constant current output, excluding the transformer

#### APPLICATIONS

Recessed luminaire for installation in ground, compact, robust design, providing ideal performance and flexibility for both indoor and outdoor applications, using less energy thanks to the latest energy-saving technology due to its high energy efficiency and longer lasting LED chip.

#### PRODUCT DESCRIPTION

Deck lights or ceiling lights application or ceiling lights application recessed luminaire for outdoor installation, anodized extruded aluminium body, tempered glass diffuser, stainless steel housing trim. Low power CREE LED, IP68

#### FIXTURE CONSTRUCTION

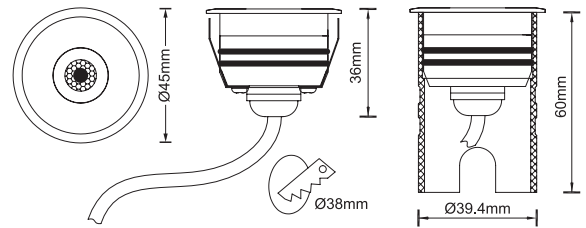
20~25µm thickness anodized film for housing with stainless steel 316 trim, solid passivated (anodizing) Aluminum CNC machined, Step tempered Glass. T=4mm. Low voltage constant current output, excluding the transformer, O-ring PMQ silicone seal gasket and cable gland for waterproof IP68, with 1PC rubber cable 1M H05RN-F 2x1mm square

#### Accessories

Mounting Sleeve Anti-corrosion grey PVC mounting sleeve as optional

Clip With clip as deck light or downlight

#### Dimension Drawing



#### Lamp Options

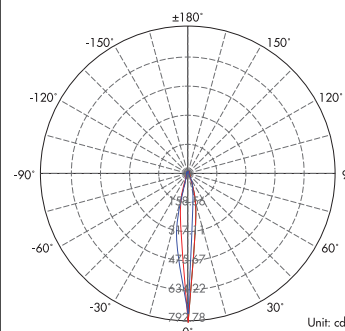
Part Number	CCT	B. angle
OLD1011C3B15	3000 K	15°
OLD1011C4B15	4000 K	15°
OLD1011C3B25	3000 K	25°
OLD1011C4B25	4000 K	25°
OLD1011C3B38	3000 K	38°
OLD1011C4B38	4000 K	38°

#### Lamp Options

Part Number	CCT	B. angle
OLD1011C3B45	3000 K	45°
OLD1011C4B45	4000 K	45°
OLD1011C3B60	3000 K	60°
OLD1011C4B60	4000 K	60°
OLD1011C3B120	3000 K	120°
OLD1011C4B120	4000 K	120°

#### Photometric Data (3000K,25°)

Light Distribution Curve [Unit: cd]



Lux distance Curve

Distance (m)	Beam Diameter (m)	Beam Diameter (m)	Lux (LUX)
0.5	0.5	0.5	198.19
1.1	1.1	1.1	49.55
1.6	1.6	1.6	22.02
2.1	2.1	2.2	12.39
2.6	2.6	2.7	7.93
3.2	3.2	3.3	5.51

Vert.Spread:15.1 Horiz.Spread:15.4